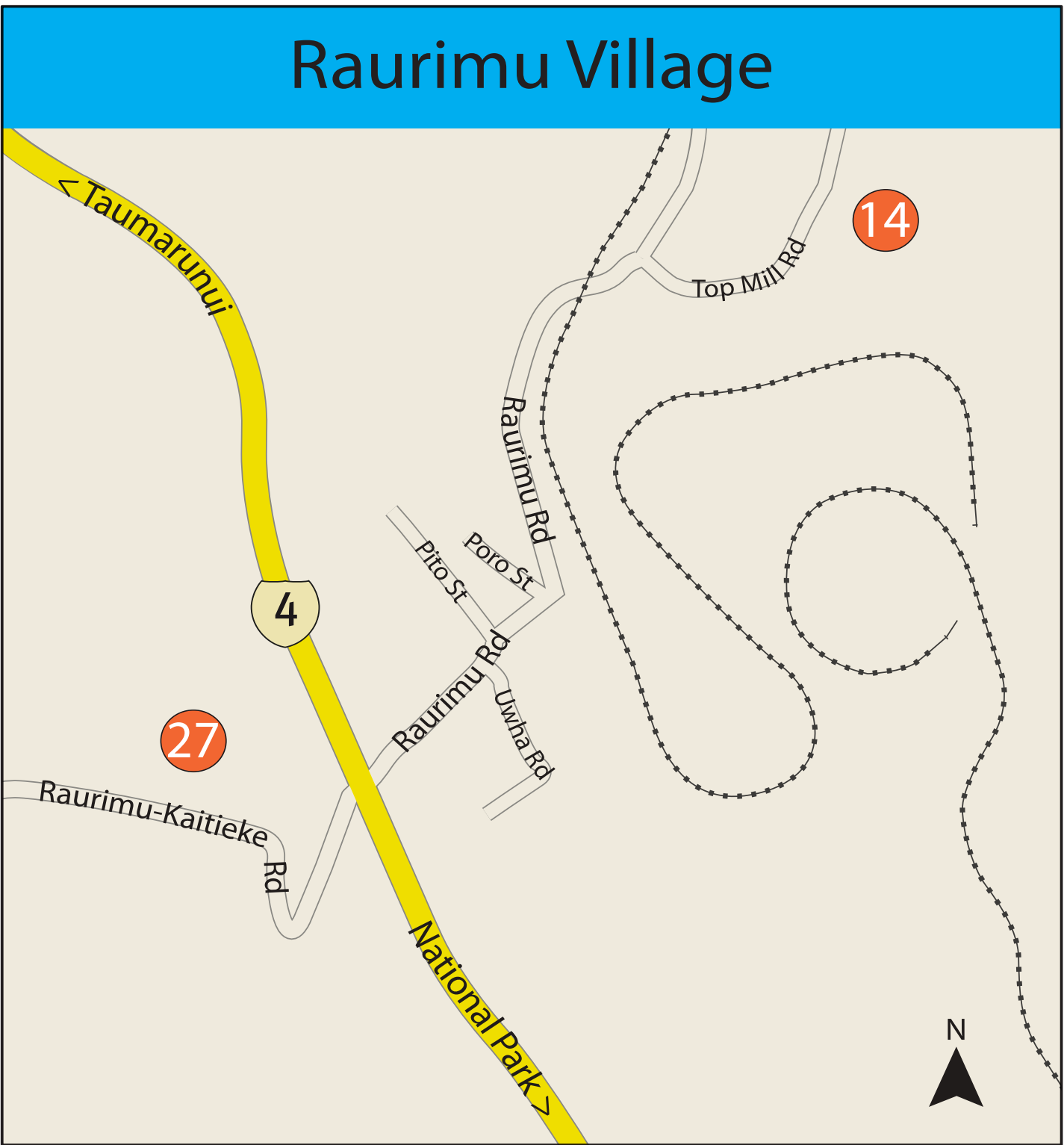
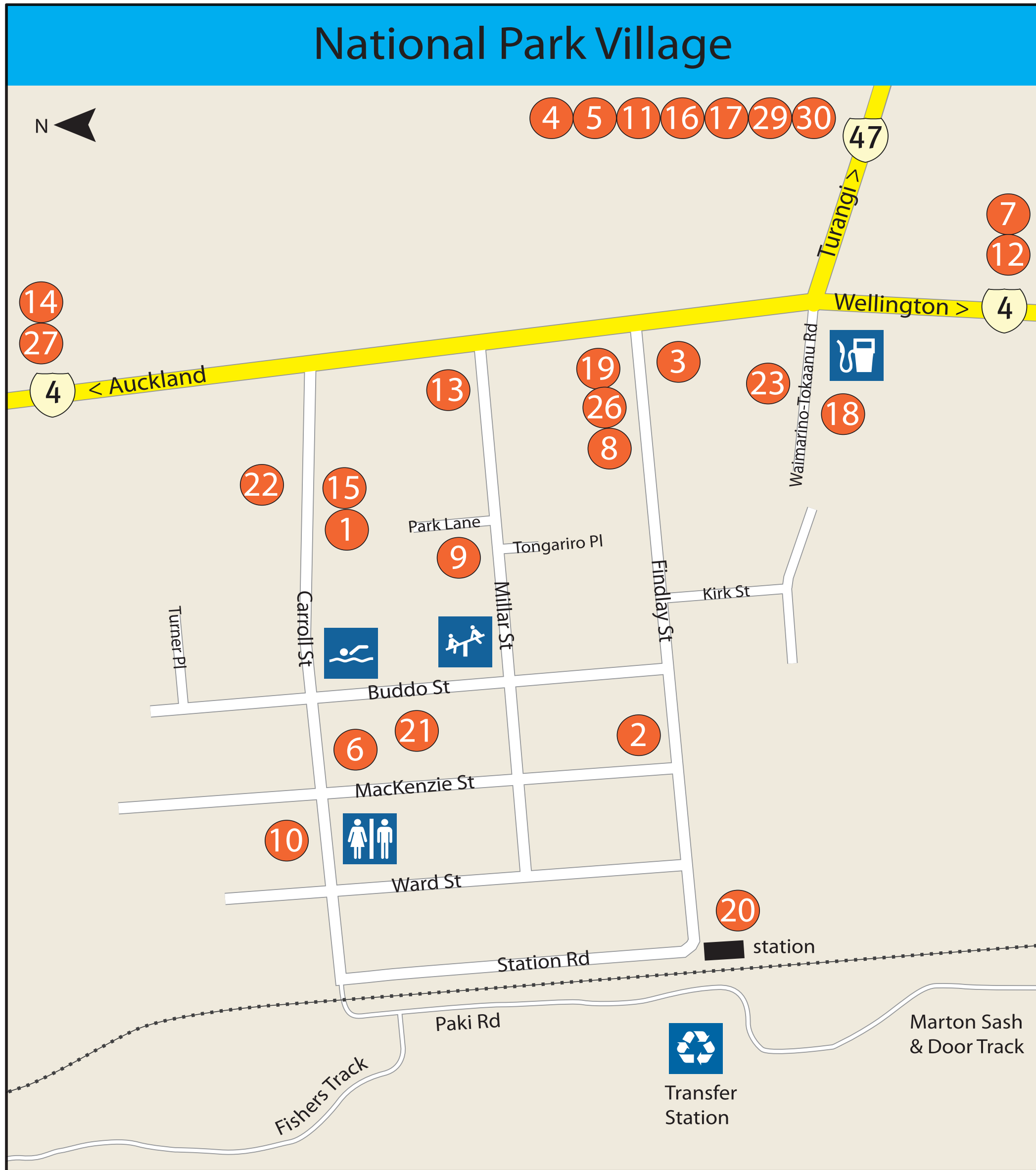


| Accommodation                |                       |              |
|------------------------------|-----------------------|--------------|
| 1. Adventure Lodge           | Carroll Street        | 07 892 2991  |
| 2. Alpine Apartments         | Findlay Street        | 07 892 2774  |
| 3. Alpine Chalets            | Findlay Street        | 07 892 2931  |
| 4. Chateau Tongariro Hotel   | Whakapapa Village     | 07 892 3809  |
| 5. Discovery Lodge           | State Highway 47      | 0800 122 122 |
| 6. Howards Mountain Lodge    | Carroll Street        | 07 892 2827  |
| 7. Mountain Heights Lodge    | State Highway 4       | 07 892 2833  |
| 8. National Park Backpackers | Findlay Street        | 07 892 2870  |
| 9. Pipers Lodge              | Millar Street         | 07 892 2777  |
| 10. Ski Haus                 | Carroll Street        | 07 892 2864  |
| 11. Skotel Alpine Resort     | Whakapapa Village     | 07 892 2894  |
| 12. The Crossing Backpackers | State Highway 4, Erua | 07 892 2894  |
| 13. The Park Hotel           | Millar Street         | 0800 800 491 |
| 14. Wood Pigeon Lodge        | Raurimu Village       | 07 892 2933  |
| 15. Plateau Lodge            | Carroll Street        | 0800 861 861 |
| 16. Whakapapa Holiday Park   | Whakapapa Village     | 07 892 3897  |
| Camping                      |                       |              |
| 5. Discovery Camping Ground  | State Highway 47      | 0800 122 122 |



| Food & Drink                        |                          |              |
|-------------------------------------|--------------------------|--------------|
| 4. Chateau Tongariro Hotel High Tea | Whakapapa Village        | 07 892 3809  |
| 17. Knoll Ridge Café                | Whakapapa Ski Area       | 07 892 4000  |
| 18. Macrocarpa Café                 | National Park            | 07 892 2911  |
| 19. Schnapps Bar                    | Findlay Street           | 07 892 2788  |
| 11. Skotel Alpine Resort            | Whakapapa Village        | 07 892 2894  |
| 20. The Station Café Restaurant     | Cnr Station Rd & Findlay | 07 892 2881  |
| 13. The Park Hotel                  | Millar Street            | 0800 800 491 |

| Ski, Snowboard & Outdoor Sales/Rentals |                              |               |
|--|------------------------------|---------------|
| 6. Howards Mountain Lodge              | Carroll Street (rental only) | 07 892 2827   |
| 17. Mt Ruapehu Ski Areas               | Whakapapa and Turoa          | 07 892 4000   |
| 21. Roy Turner Ski + Board Shop        | Buddo Street                 | 0800 SNOWZONE |
| 22. Ski Biz Hire & Outdoor Shop        | Carroll Street               | 07 892 2717   |



| Activities & Shops                  |  |              |
|-------------------------------------|--|--------------|
| <b>Chairlift Rides</b>              |  |              |
| 17. Whakapapa Ski Field             |  | 07 892 4000  |
| <b>Guided Walks</b>                 |  |              |
| 23. Adrift Tongariro and Ruapehu    |  | 07 892 2751  |
| 24. Adventure Outdoors Tongariro NZ |  | 0800 386 925 |
| <b>Kayaking/Canoeing</b>            |  |              |
| 23. Adrift Wanganui Guiding         |  | 07 892 2751  |
| <b>Mini Golf</b>                    |  |              |
| 19. Findlay Street                  |  | 07 892 2788  |
| <b>Mountain Biking</b>              |  |              |
| 23. Adrift Guided Tours             |  | 07 892 2751  |
| 25. Kiwi Mountain Bikes             |  | 0800 KMBIKES |
| 26. My Kiwi Adventure               |  | 0800 784 202 |
| <b>Quad Bikes</b>                   |  |              |
| 27. Ruapehu Adventure Rides         |  | 0800 787 433 |



| Transport                           |                           |              |
|-------------------------------------|---------------------------|--------------|
| 5. Discovery Alpine Shuttles        | Discovery Lodge           | 0800 122 122 |
| 6. Mountain Transport               | Howards Lodge             | 07 892 2827  |
| 15. Plateau Shuttle                 | Plateau Lodge             | 0800 861 861 |
| 13. The Park Hotel Crossing Shuttle | The Park Hotel            | 0800 800 491 |
| 1. Tongariro Track Transport        | Adventure Lodge           | 07 892 2991  |
| 8. Tongariro Volcanic Adventures    | National Park Backpackers | 07 892 2870  |

|   |  |              |
|---|--|--------------|
| <b>Rafting</b>                                |  |              |
| 28. Tongariro River Rafting                   |  | 0800 101 024 |
| <b>Rock Climbing Wall</b>                     |  |              |
| 8. Findlay Street                             |  | 07 892 2870  |
| <b>Stand Up Paddle Boarding Tours</b>         |  |              |
| 26. My Kiwi Adventure                         |  | 0800 784 202 |
| <b>Tongariro National Park Visitor Centre</b> |  |              |
| 29. Whakapapa Village                         |  | 07 892 3729  |
| <b>Volcano Flightseeing</b>                   |  |              |
| 30. Mountain Air                              |  | 07 892 2812  |